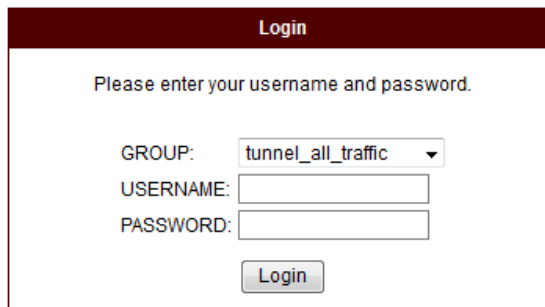


TAMU Connect VPN

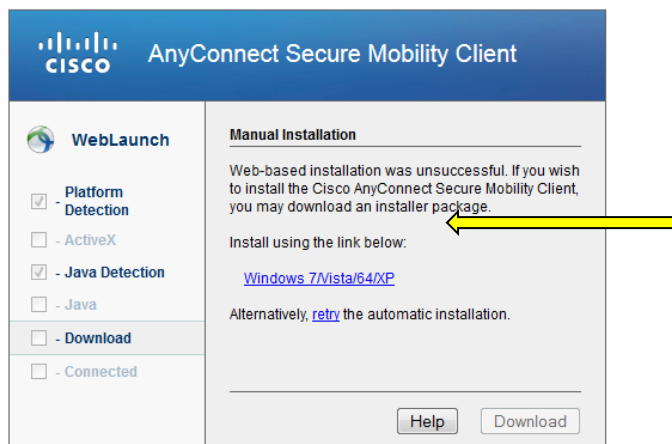
10/3/13

1. To use the “Connect” VPN at TAMU, open a browser and go to <http://connect.tamu.edu> You will see the as shown. Enter your NetID and password, then click “Login”. If you encounter problems with your NetID or password, contact the TAMU help desk at 979-845-8300, or helpdesk@tamu.edu or go to the helpdesk website at <http://hdc.tamu.edu/>

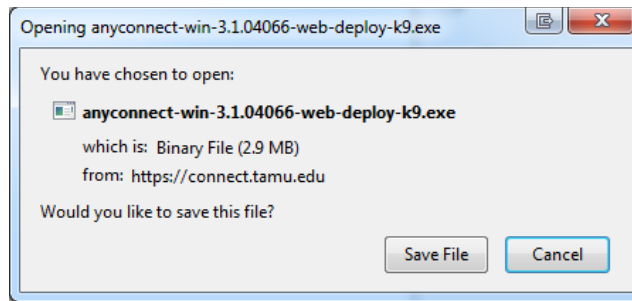


The screenshot shows a login form titled "Login" with a dark red header. Below the header, it says "Please enter your username and password." There are three input fields: "GROUP:" with a dropdown menu showing "tunnel_all_traffic", "USERNAME:" with a text box, and "PASSWORD:" with a text box. A "Login" button is located below the password field.

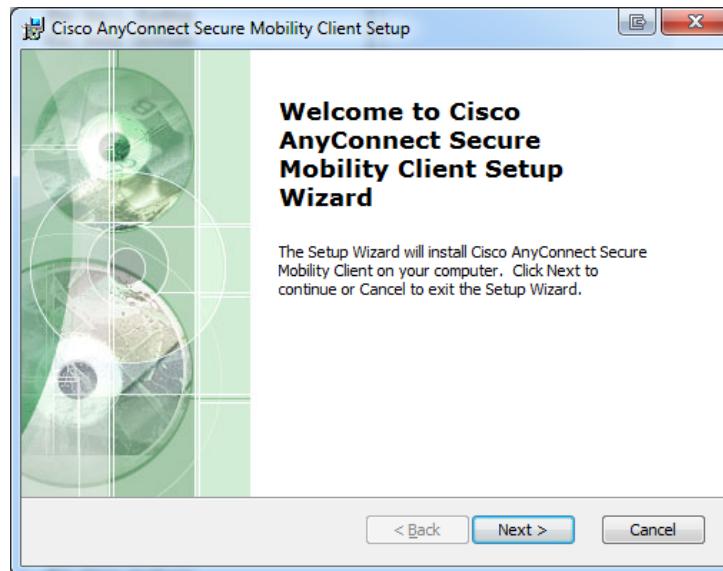
2. If your browser supports ActiveX or Java, the site will prompt you to install the VPN client. If not, you should receive the screen shown below, which contains a link to the manual download.



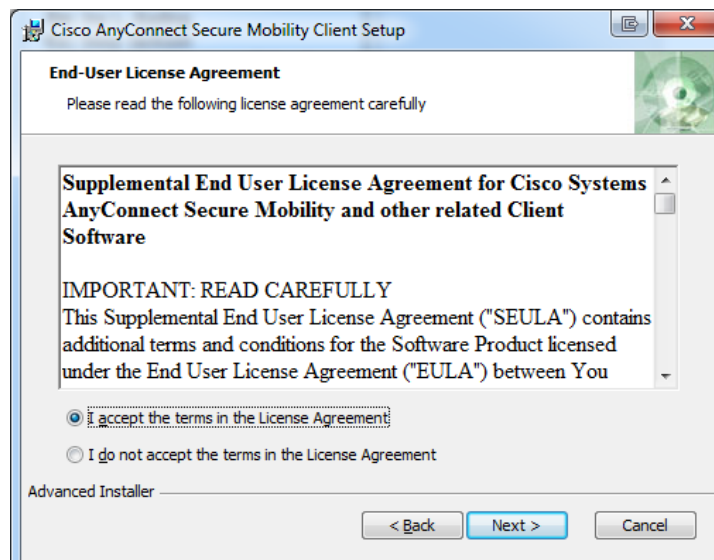
3. Click on the link and you should get a screen where you can run the program or save it. The save screen is shown below. Select **Save file** and then go to the area where you saved the file and double click to install the VPN client.



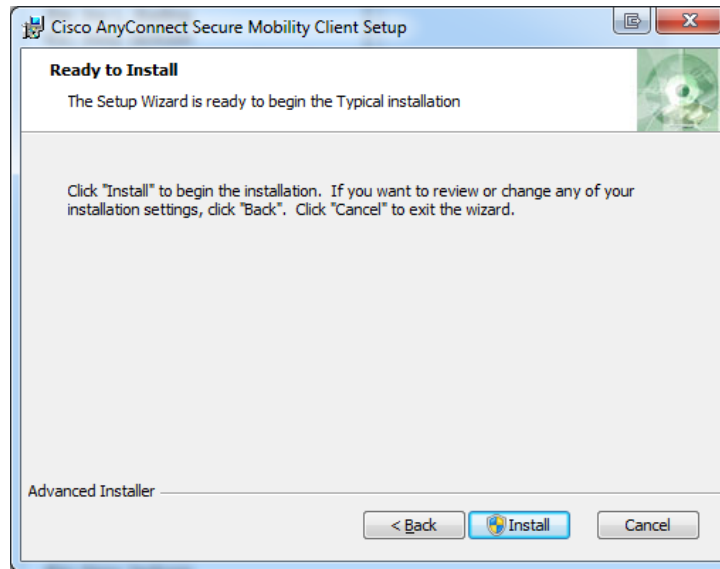
4. When this screen is displayed click **Next**.



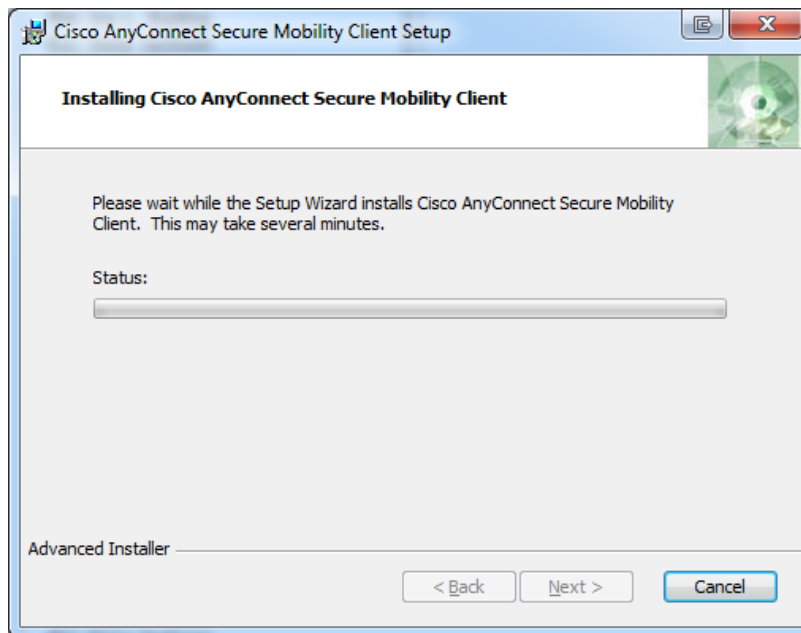
5. Then select the **"I Accept..."** radio button and click next.



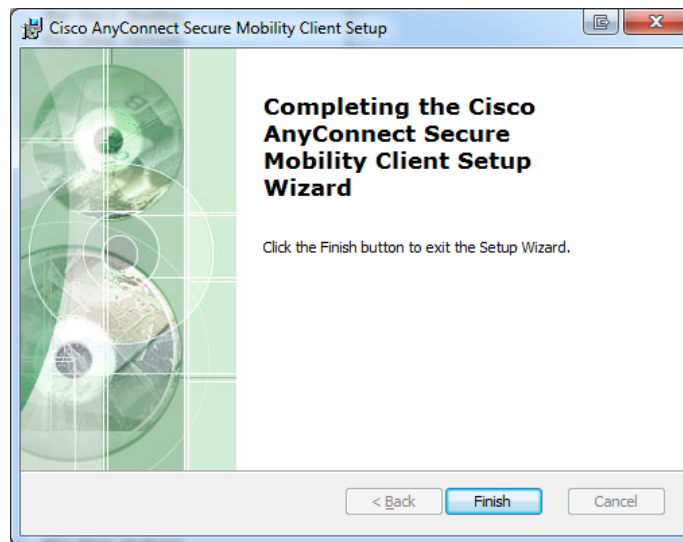
6. On this screen click “Install”



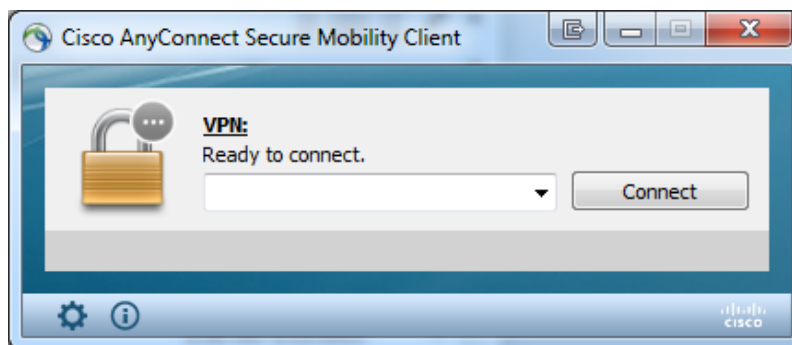
7. The install will then proceed.



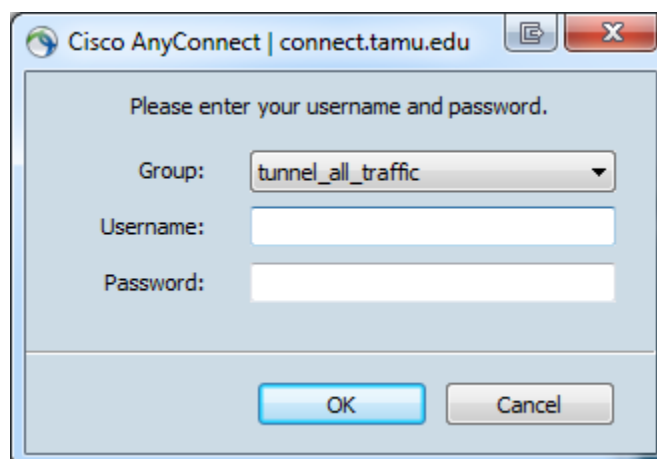
8. When this screen is displayed, click “Finish”



9. After installing the program, go to **Start>All Programs>Cisco>** and click on **Cisco AnyConnect Secure Mobility Client**. You will see the screen below. Type in connect.tamu.edu in the text block and click on “Connect”



10. On the following screen, type in your NetID in the Username block and insert your NetID password, then click “OK”



11. You will then be connected. When you have completed your session, you can click **Disconnect**. It will also automatically disconnect after a period of non-use.

